

January 30, 2020

# Emerald Ash Borer Management in Delaware & Raritan Canal State Park



**NJ Forest Service**  
**Samantha Hensen**

[Samantha.Hensen@dep.nj.gov](mailto:Samantha.Hensen@dep.nj.gov)

# 2015 through 2017

- Forest Service asks Park Service to conduct Ash Survey
- Parks and Forests with an abundance of ash in high risk areas were identified and monitored
- Areas in Washington Crossing SP, D&R Canal SP, Swartswood SP, Voorhees SP, etc.

# Emerald Ash Borer in D&R Canal State Park

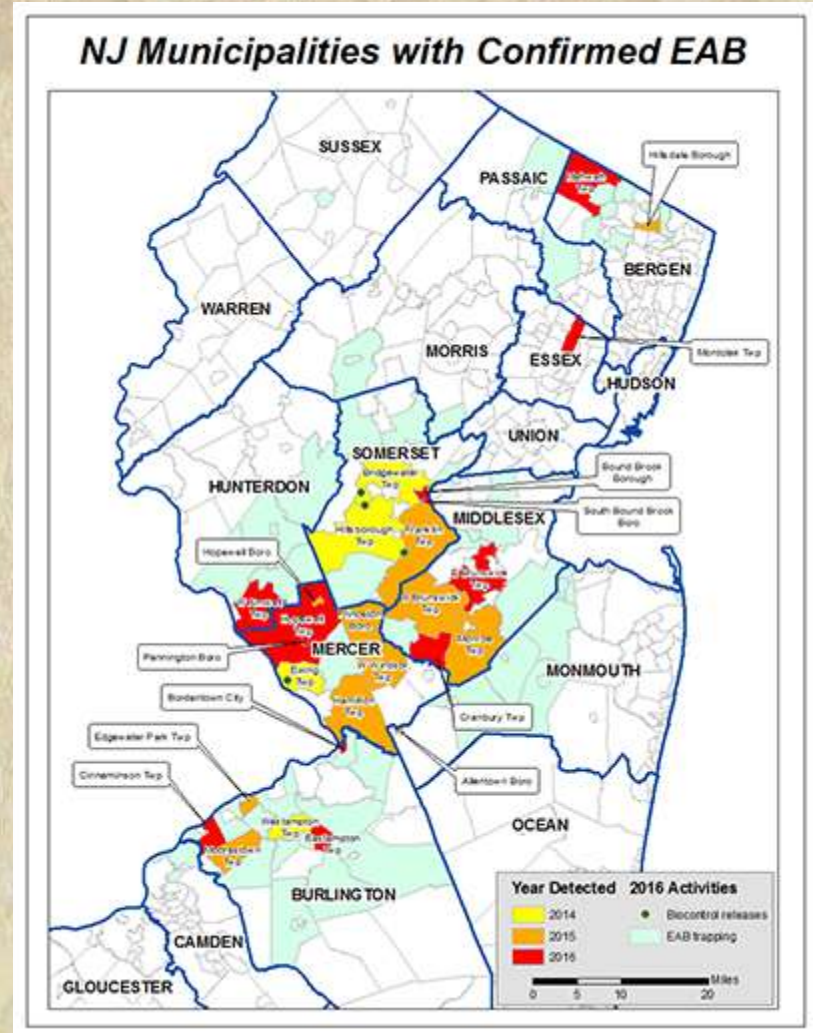
**\*\*\*High Risk State Park\*\*\***

- Heavily used park—over 1 million visitors/year – public safety at risk
- The first state park with EAB detection in 2015
- Second detection in 2016
- Surrounding municipalities EAB detected
- Linear, contiguous forested land with ash serves as corridor for EAB to spread more quickly

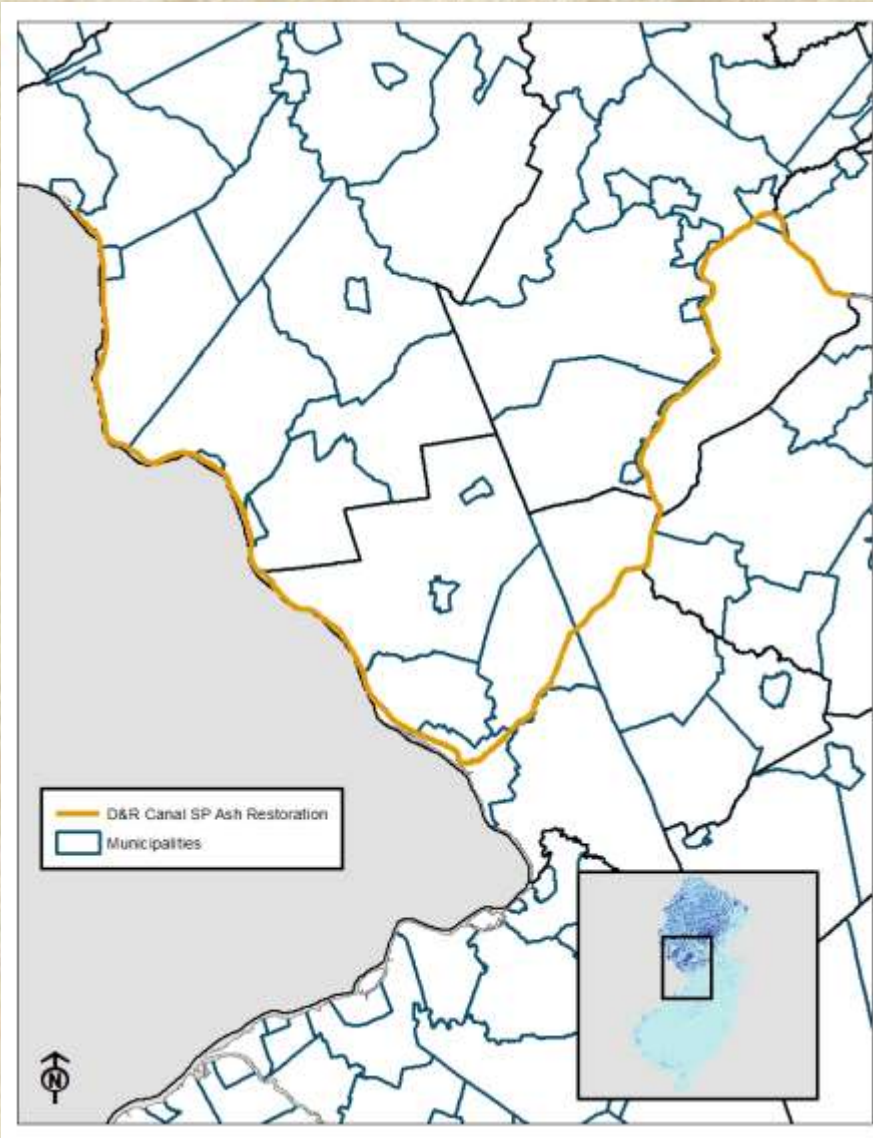
# Emerald ash borer in NJ c. 2014

Detected in 27 Municipalities and 8 Counties

- First detected in 2014 in Somerset County



# 21 Municipalities Over 4 Counties



MUNICIPALITY	COUNTY
FRANKLIN TWP	SOMERSET
SOUTH BOUND BROOK BORO	SOMERSET
PLAINSBORO TWP	MIDDLESEX
SOUTH BRUNSWICK TWP	MIDDLESEX
NEW BRUNSWICK CITY	MIDDLESEX
LAWRENCE TWP	MERCER
TRENTON CITY	MERCER
PRINCETON	MERCER
HOPEWELL TWP	MERCER
HOPEWELL TWP	MERCER
TRENTON CITY	MERCER
EWING TWP	MERCER
STOCKTON BORO	HUNTERDON
KINGWOOD TWP	HUNTERDON
MILFORD BORO	HUNTERDON
ALEXANDRIA TWP	HUNTERDON
LAMBERTVILLE CITY	HUNTERDON
DELAWARE TWP	HUNTERDON
WEST AMWELL TWP	HUNTERDON
FRENCHTOWN BORO	HUNTERDON



# Delaware & Raritan Canal Emerald Ash Borer Management Project



NIDEP  
 Division of Parks and Forestry  
 Forest Service  
 11/2016



Image Source:  
 NIDEP SGIA 2017  
 Scale - Main Frame

To mitigate the impacts of emerald ash borer within the park, approximately 1,500 identified ash trees which are at risk will be removed. Hazard ash trees leaning into or towards a 15-foot buffer from the main and feeder easements will be removed via chainsaws. The risk trees considered for removal will be 5 inches in diameter or greater and average 6 trees per acre. As part of our reforestation efforts in or near those same locations replanting with seedlings and tree active control will be considered.



# Ash Management Options

- Insecticide Treatment
  - Individual trees are treated
  - Trees must be healthy
  - Acreage limits may apply
- Biological Control Release
  - Long-term management
  - 40+ Acres of contiguous forests
- Ash Removal
  - Pre-emptive before ash mortality
  - After ash mortality
- Combination of Options



5471784

# Funding Source

- NRD Funding
  - Spending Plan Approved August 3, 2016
- USDA Forest Service CORE Funding
  - Monitoring and Treatment



# Approvals & Permits

- Approval through from LMR and SHPO
- Land Use Regulations Consultation
  - Exemption (7:13-7.26 Permit-by-rule 26 forest management activities) Received Dec. 15, 2016
- D&R Canal Commission Approval
- Commissioner Approval

# Timing Restrictions/Buffers

- ENSP – work *can* be conducted October thru December
- ONLM - site specific recommendations to be made in 13 locations along towpath
- NJWSA - planting buffers discussed to minimize potential impacts to canal wall
  - Planting of shrubs/small trees rather than large trees

# Communication & Outreach

- Press release
- Letter to surrounding municipalities through DEP's Office of Local Government Assistance
- Webpage outlining management
- Facebook post on all DEP pages
- ListServ announcement
- Link on [emeraldashborer.nj.gov](http://emeraldashborer.nj.gov)
- Signage



# Activity Parameters

- Trees to be cut
- Term Contract Vendor (Tree Company)-  
Equipment
- Reforestation
- Timing Restrictions/Buffer
- Treatments –trunk injections



# Outcome & Lessons Learned

- Internal and external presentations and discussions
- Rural/Urban Limitations blended techniques
- Activity Limitations – towpath
- Funding – it adds up quick
- Treatments – cycles
- Wood Utilization – limited by proposal and spread concerns

# Generalized Common Concerns

- Phone calls/emails from homeowners, shade tree commissions, municipalities, and counties
- Reporting EAB, or dead/dying ash
- Treatment options (usually call too late)
- Funding/compensation for removal